



# DC-40

Ultrasound System

powerful | efficient | sleek

**mindray**

To deliver on the promise of quality healthcare within reach, Mindray's DC-40, the next generation of shared service ultrasound systems, incorporates innovative high performance technology in an elegant compact design.

Combining a wide range of clinical application packages, auto-measurement tools, and on-board education software, the DC-40 makes ultrasound exams accurate, efficient and accessible with exceptional capability. The 10.4" touchscreen provides ease-of-use and helps reduce the daily work burden, while the compact design and built-in battery ensures maximum mobility.

The DC-40 provides you with an affordable way to offer the advantages of advanced, high-performance ultrasound to your patients.



# Enhanced diagnostic confidence

The DC-40 offers balanced performance across a wide range of applications and produces advanced image quality in a wide variety of patient types. The broad range of transducers and shared services capabilities facilitates extensive exams:

- OB/GYN
- Abdominal
- Small Parts
- Transcranial
- Cardiac
- Vascular
- Pediatric
- MSK

## iClear

iClear speckle-reduction imaging technology reduces the image speckle noise and acquires clearer and sharper images.

## PSH

Phase Shift Harmonic imaging (PSH), also known as purified harmonic imaging, plays an important role in reducing noise while preserving tissue definition and resolution.

## iBeam

iBeam spatial-compounding imaging technology permits use of multiple transmitting angles to form a single image, resulting in enhanced contrast resolution and improved visualization.

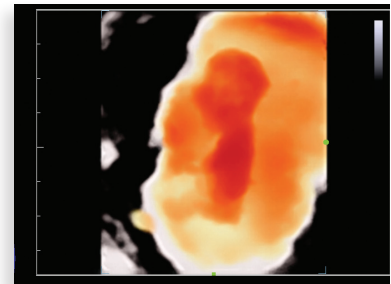


# Exceptional capability

The DC-40 delivers a range of tools that maximize diagnostic accuracy for general imaging, OB/GYN, cardiology, and other modalities. The 3D imaging capabilities incorporates innovative imaging applications for a high standard of performance. In addition, iLive 4D imaging technology delivers optimal results and can increase user confidence.

## **iLive** – Realistic 4D rendering

Integrating a ray-casting algorithm with a new virtual lighting modality, iLive generates amazingly realistic views of the fetus with human skin-like images



Fetus with iLive

## **Smart OB** – Automatic measurement for OB parameters

Accurate auto measurements of most frequently examined fetal parameters including BPD, OFD, HC, AC and FL

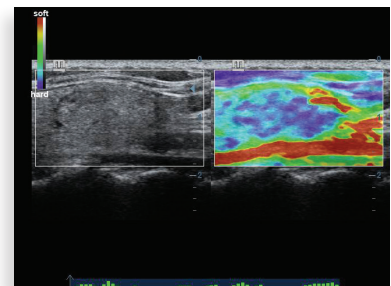
## **iPage** – Displays volume data with multiple parallel 2D images

## **Smart NT** – Automatic measurement of NT

**IVF package** – Intuitive documentation for follicles and endometrial measurements

## **Natural Touch Elastography**

Based on Mindray's exclusive technology, Natural Touch Elastography reduces dependence on user operation technique, improving reproducibility for increased clinical utility.



Thyroid Nodule with Elastography

## **iScape** – Shows whole anatomical structures

## **Smart Bladder** – Auto measurement of bladder volume

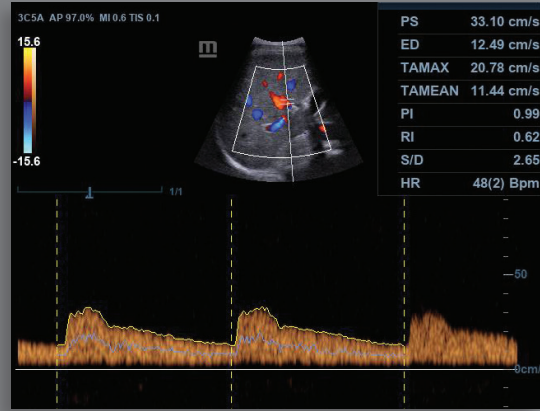
## **Auto IMT** (Intima Media Thickness)

Automatically detects and calculates the thickness of carotid intima. With comprehensive IMT report, Auto IMT facilitates an accurate and efficient evaluation of carotid condition.

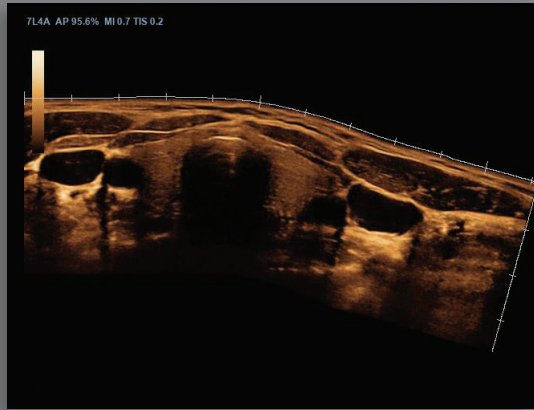




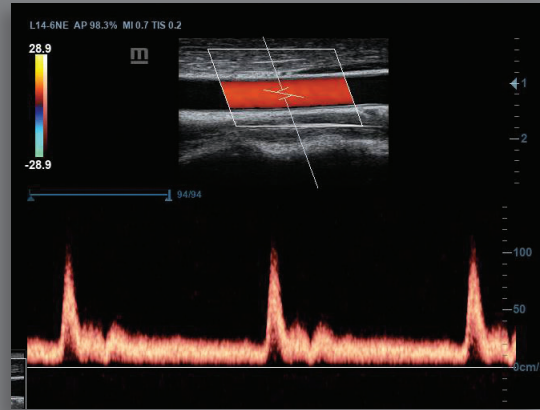
Morison's Pouch



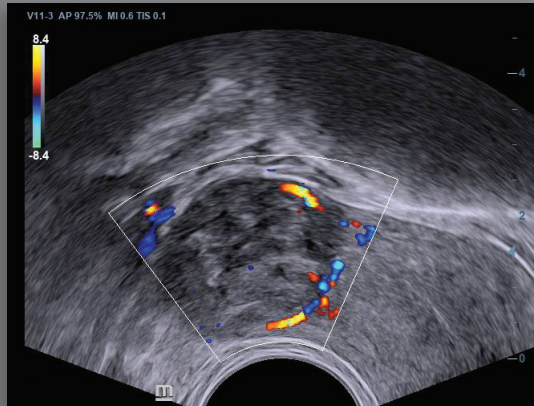
Hepatic Artery



iScan of Thyroid



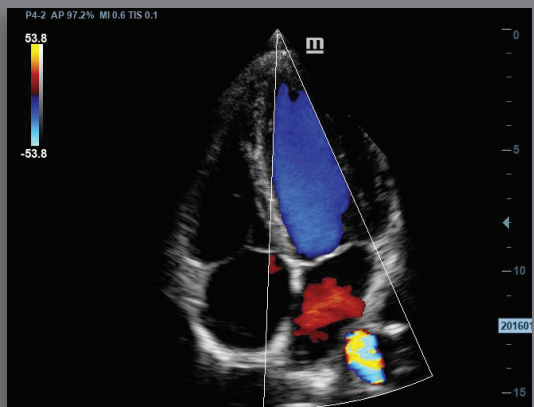
PW of Common Carotid Artery



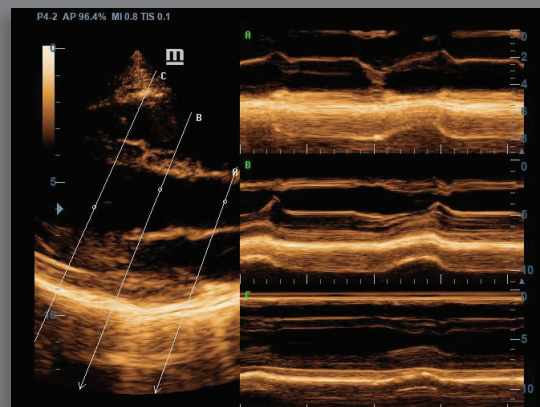
Color Flow of Uterus Mass



3D of Fetal Spine



Color Flow of Apical View



Anatomic M Mode of Long Axis

# Ergonomics

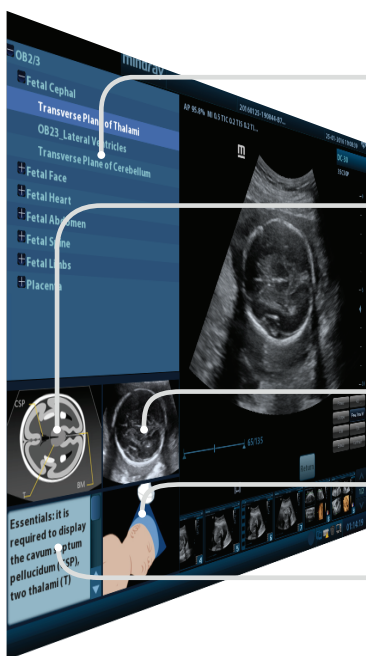
The DC-40 is extremely user friendly and ergonomically designed to provide an excellent user experience. The intuitive adjustable touchscreen is designed for easy access to commonly used functions, helping to speed exams. The simple user interface and height-adjustable, swivel control panel provide tools which assist practitioners to increase patient throughput without sacrificing comfort or performance.



# Increased efficiency

## iScanHelper

With iScanHelper, practitioners can learn basic scanning knowledge with the operation technique, standard planes, and anatomical information.



### Wide selection of application-specific exam planes

- Various applications: Abdomen, OB/GYN, Thyroid, Breast, Testicle
- Different (multiple) image modes

### Anatomical illustrations

- Normal anatomical illustrations including schematic and ultrasound images
- Side display of standard sonogram providing visual guidance on the region of interest

### Standard ultrasound images

- Real-time scanning comparison for your reference

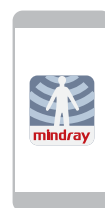
### Scanning reference pictures

- Correct patient position and transducer placement demonstration

### Tips on scanning and diagnosing

## MedSight™ Mobile device app for image transfer

MedSight lets you transfer clinical images and cines to your smart device via an interactive app. This is ideal for a mother-to-be wanting to share the images of the fetus with her family or friends; or for a training session or a discussion with your peers on a specific case.



IOS/Android App



## Automatic Measurement

Application-specific auto-measurement packages include Auto IMT, Auto LV, auto PW trace and calculation, Smart OB and Smart NT, all reducing repetitive steps and button pushes, providing enhanced workflow.

## Raw Data

Clinicians now have the freedom to perform image adjustments, measurements and other functions after the exam is completed using recorded data.